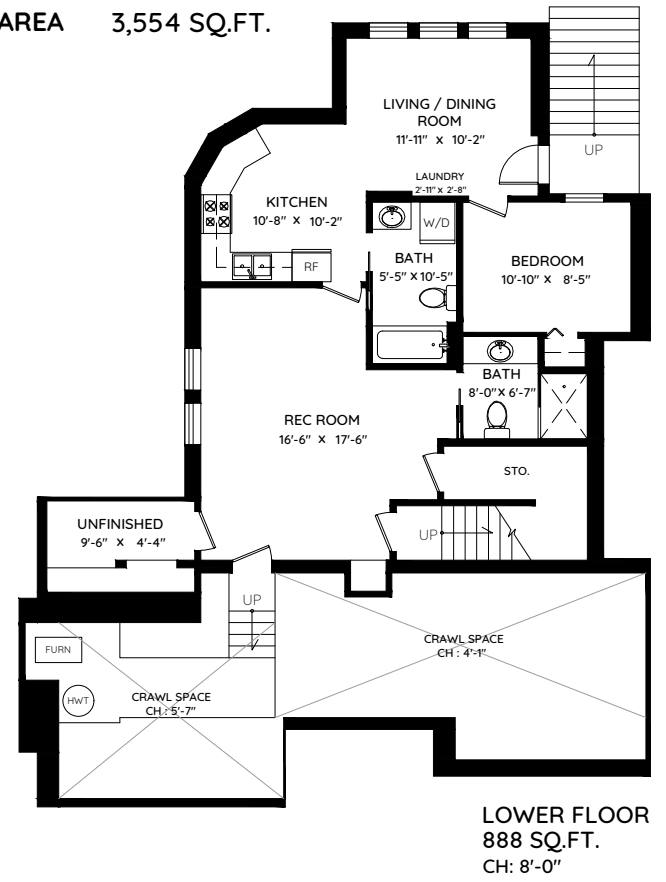
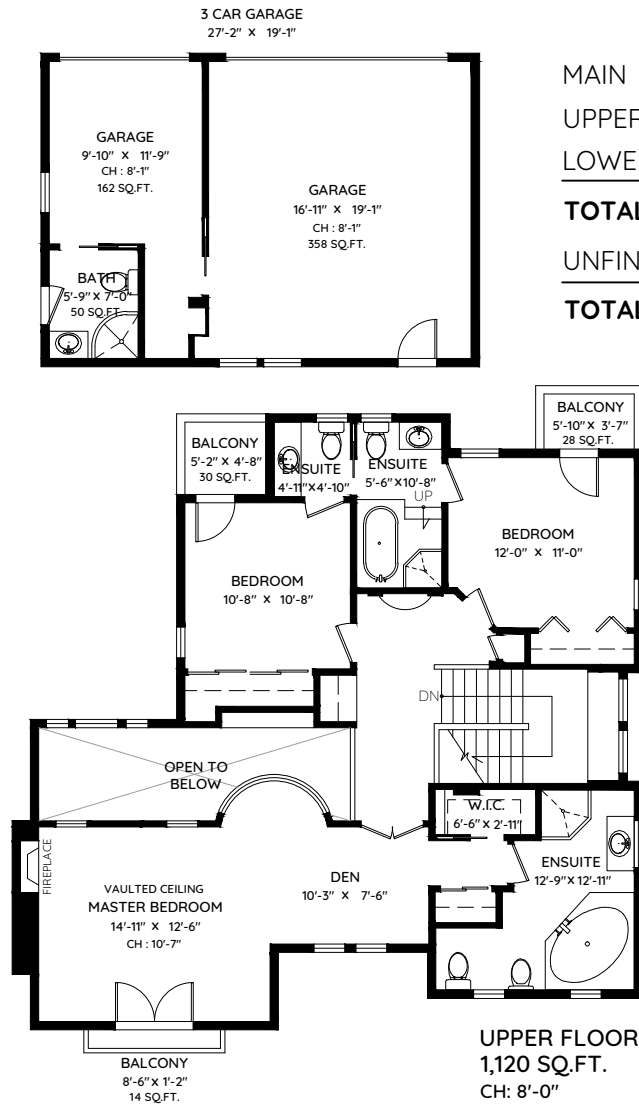
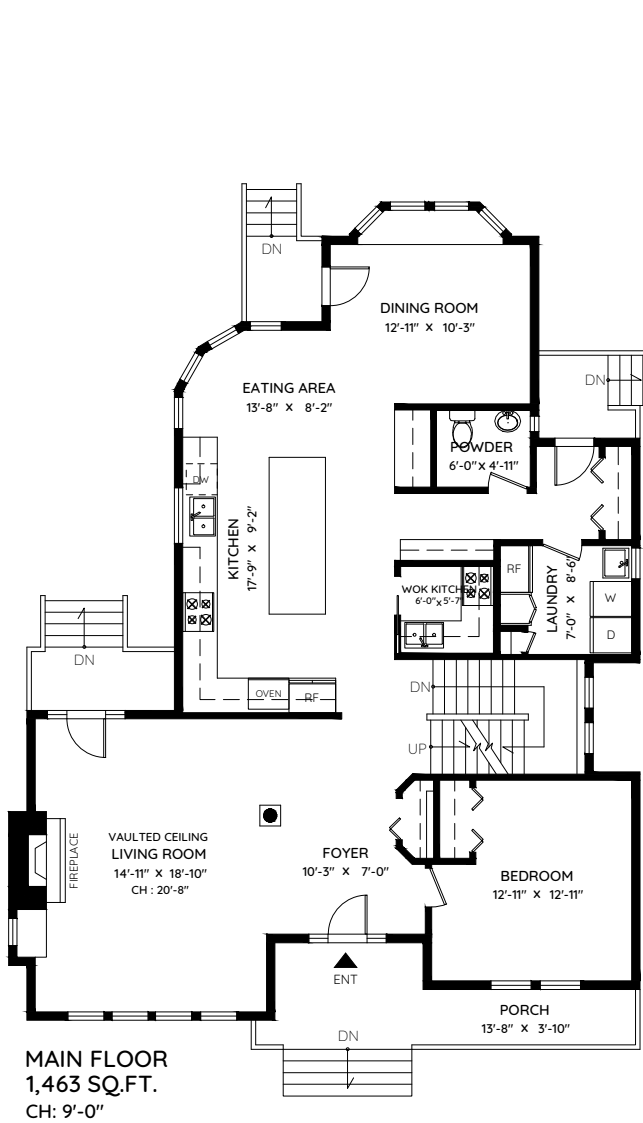


# 4253 GRANT STREET

BURNABY, BC

**DORIS GEE & PHIL MOORE**  
MAKING WORLD OF DIFFERENCE

DORISGEE.COM



MAIN	1,463 SQ.FT.	3 CAR GARAGE	570 SQ.FT.
UPPER	1,120 SQ.FT.	PORCH	147 SQ.FT.
LOWER	888 SQ.FT.	BALCONY	72 SQ.FT.
<b>TOTAL</b>	<b>3,471 SQ.FT.</b>	<b>TOTAL</b>	<b>789 SQ.FT.</b>
UNFINISHED	83 SQ.FT.		
<b>TOTAL AREA</b>	<b>3,554 SQ.FT.</b>		



The floor plan and the measurements are approximate within +/- 2% and are to be used for advertising usage only. May include unfinished area. Not suitable for architectural or construction. E&O Insured