

7056 JUBILEE AVENUE

BURNABY, BC

| | |
|-------|--------------|
| MAIN | 1,623 SQ.FT. |
| LOWER | 1,311 SQ.FT. |

TOTAL 2,934 SQ.FT.

GARAGE 453 SQ.FT.

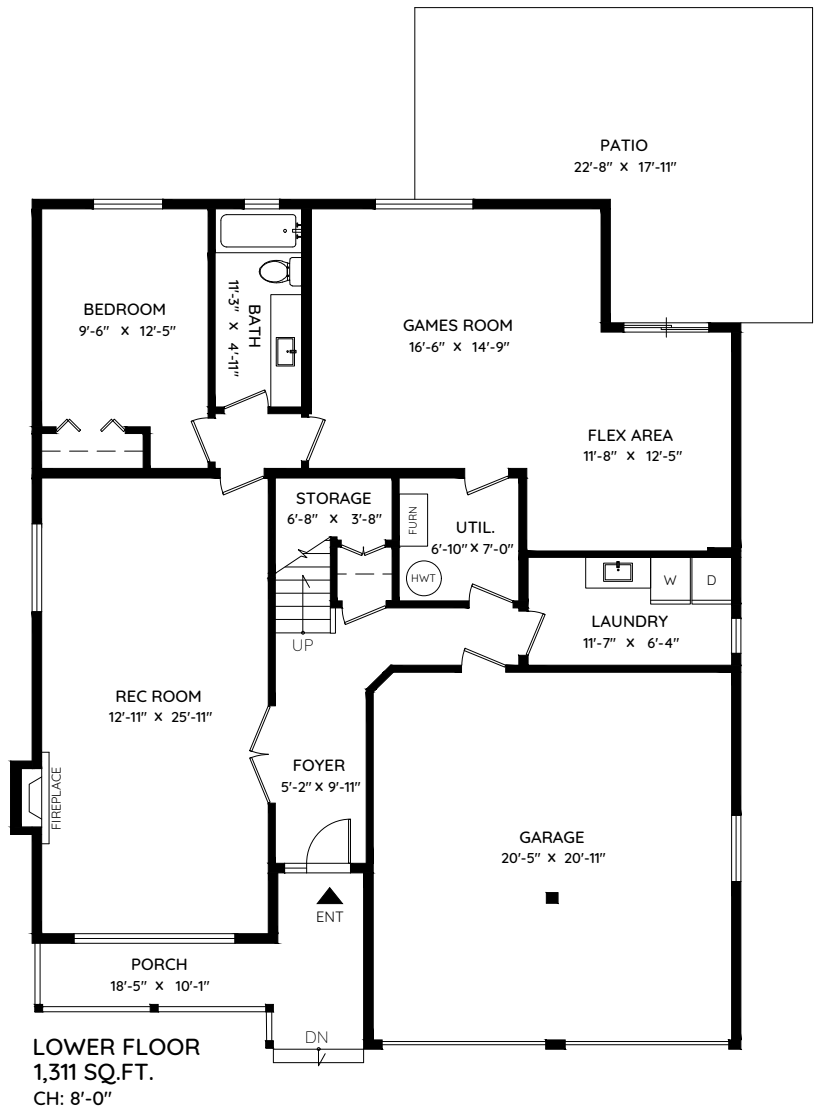
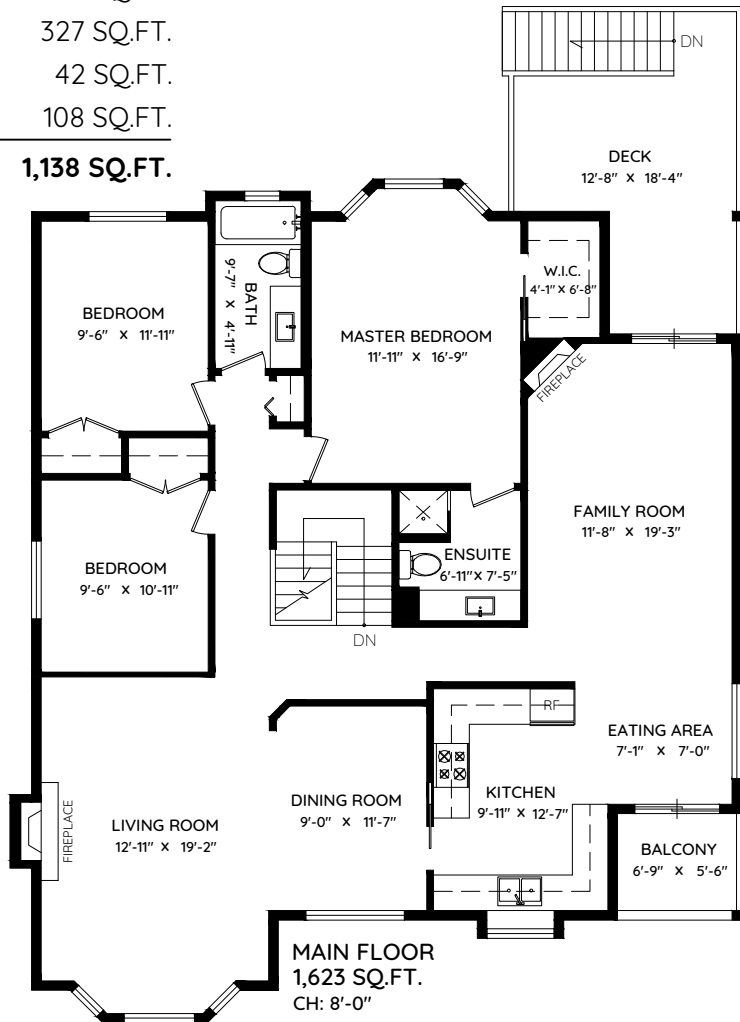
DECK 208 SQ.FT.

PATIO 327 SQ.FT.

BALCONY 42 SQ.FT.

PORCH 108 SQ.FT.

TOTAL 1,138 SQ.FT.



DORIS GEE &
PHIL MOORE

MAKING WORLD OF DIFFERENCE

DORISGEE.COM



The floor plan and the measurements are approximate within +/- 2% and are to be used for advertising usage only.
May include unfinished area. Not suitable for architectural or construction. E&O Insured