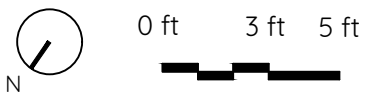
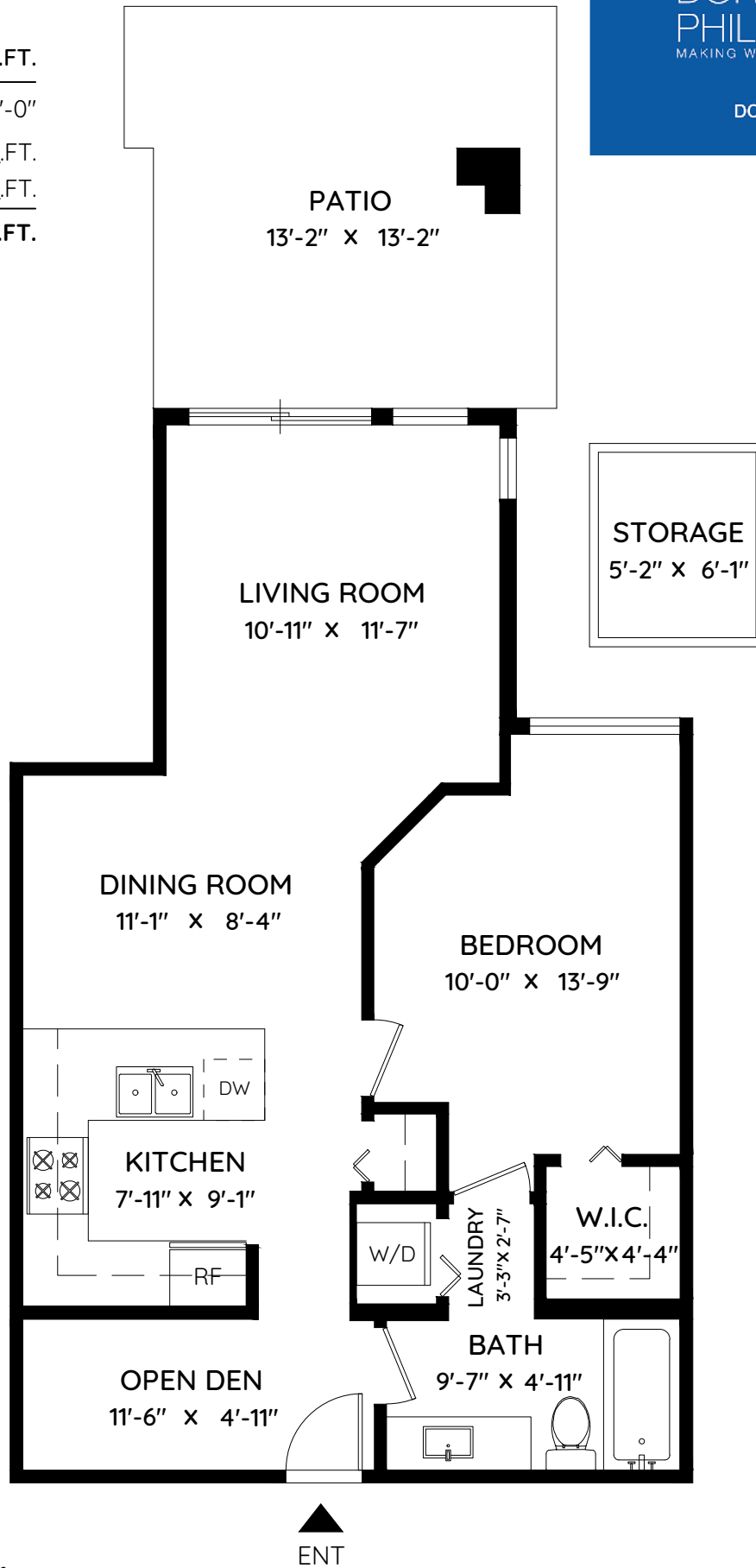


116 - 7131 STRIDE AVENUE

BURNABY, BC

LIVING AREA	676 SQ.FT.
CEILING HEIGHT	8'-0"
PATIO	178 SQ.FT.
STORAGE	31 SQ.FT.
TOTAL	209 SQ.FT.

DORIS GEE & PHIL MOORE
MAKING WORLD OF DIFFERENCE
DORISGEE.COM



The floor plan and the measurements are approximate within +/- 2% and are to be used for advertising usage only. May include unfinished area. Not suitable for architectural or construction. E&O Insured