

308 - 250 FRANCIS WAY

NEW WESTMINSTER, BC

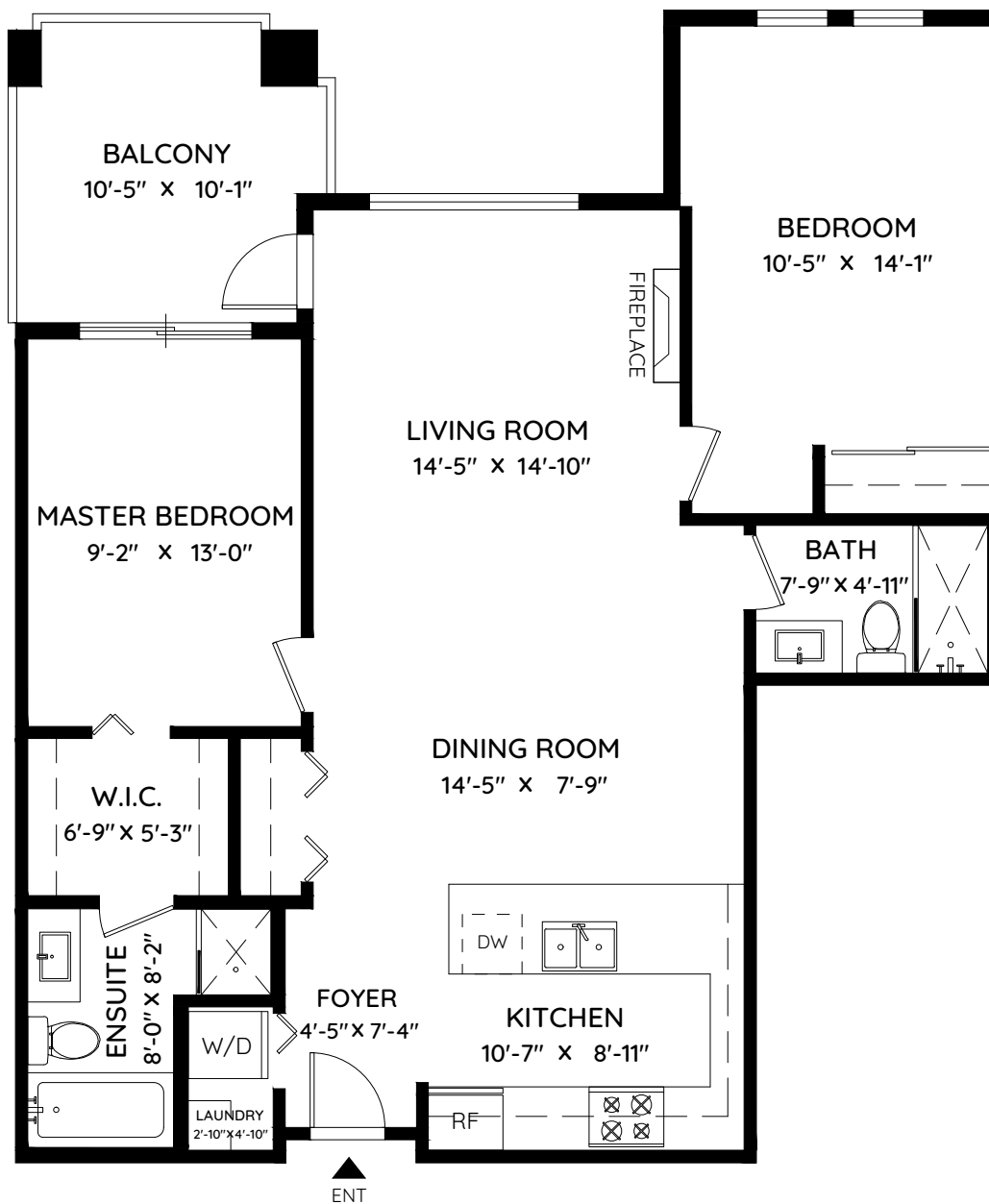
LIVING AREA 973 SQ.FT.

BALCONY 100 SQ.FT.

CEILING HEIGHT 9'-0"

DORIS GEE &
PHIL MOORE
MAKING WORLD OF DIFFERENCE

DORISGEE.COM



0 ft 3 ft 5 ft



The floor plan and the measurements are approximate within +/- 2% and are to be used for advertising usage only. May include unfinished area. Not suitable for architectural or construction. E&O Insured